



# Heritage Notes

from the Teller Historic & Environmental Coalition

## Inside this issue

- 2 About THE Coalition
- 3 Membership Keeps THE Coalition at Work!
- 4 Member organizations associated with THE Coalition
- 5 Colorado Scenic Byways Book Available to Members
- 6 20<sup>th</sup> Annual Christmas in Divide
- 6 Victor Lowell Thomas Museum announces Spring Tours
- 7 Taking up the Tracks
- 8 Annual Meeting Notice

## Colorado's State Historic Fund Awards Grant for Depot Stabilization Project!

By David Martinek, chairman of the board

Friday, August 12, was a great day for the Teller Historic and Environmental Coalition (THE Coalition). It was on that day that we learned that our grant request to rehabilitate and stabilize the foundation of the Midland Depot at Divide was approved by the State Historical Fund (SHF).

On that Friday morning I received a large packet from SHF confirming that our grant for \$106,574 (with matching funds from a private donor) would be funded. The packet contained all sorts of information, of course, including how to create a work statement, advertise for bids from interested contractors, report on the progress of work and receive funds to pay for work done. The packet also contained information on establishing a perpetual easement for the depot property and listed the names of various contact personnel at SHF that we could call on for help getting started.

Dick Unzelman (our depot committee chairman and the depot project manager) and I have reviewed the packet with the depot owner and several members of the MDAD committee and THE Coalition executive committee. We have also contacted the SHF contracting officer to arrange for a kick-off meeting with her department and SHF's historic preservation specialist.

*See Grant continued on page 3.*

## Documenting the Natural, Cultural, and Historic Gems of Teller County

At THE Coalition's annual meeting last year, a lively discussion about the known—and lesser known—gems of Teller County formed the nugget of a new project. The Heritage Tourism project is alive and well. In fact, the committee of 12 delegates representing the major areas of the county has met nearly every month for a year and plans to publish a prototype map of its findings in the first few months of 2012.

*See Heritage Tourism continued on page 2.*



Fall 2011

## Heritage Notes

is a quarterly publication of THE Coalition. Please send articles and calendar events to the managing editor.

### Managing Editor

Mary Menz  
mmenz@Q.com

**THE Coalition's board of directors meets on the fourth Wednesday of January, March, May, September, and November at the Midland Depot in Divide.**

### Board of Directors

#### Chair

Albert (David) Martinek

#### Vice Chair

Doris (Dee) Breitenfeld

#### Secretary

Marion Ritchey Vance

#### Treasurer

George Parkhurst

#### Members at Large

Sherri Albertson  
Bill Buckhanan  
Jane Lass  
Jane Mannon  
Mary Menz

#### THE Coalition office

P.O. Box 368  
Woodland Park, Colorado 80866

#### Phone

(719) 687-7605

#### Website

www.TheCoalitionCO.org

#### Email

THE@TheCoalitionCO.org

## About THE Coalition

THE Coalition is committed to preserving the historic, cultural, environmental, recreational and scenic resources in and around Teller County, and to broadening public understanding regarding the significance of those resources.

Working with member organizations, THE Coalition board has achieved much in the organization's ten-year history: THE Coalition has—

- ▶ Helped member organizations identify funding sources to obtain grants, including funding for "The Locals," a public art project of the Two Mile High Club that honors the role played by donkeys in the Cripple Creek gold mining days.
- ▶ Managed the five-year collaborative effort among the Rural Land Preservation Group (RLPG), Palmer Land Trust and Teller County Parks to preserve 1,300 acres of scenic landscape and wildlife habitat, completing the 5,000 acre Pikes Peak Conservation Corridor along Hwy 24 between Woodland Park and Divide.
- ▶ Serves as fiscal agent for the Victor Penguins, the Two Mile High Club, RLPG, Woodland Park Hockey Association, and others.
- ▶ Co-sponsors RLPG's popular series of forums for ranchers, landowners, and other interested Teller County residents.
- ▶ Co-sponsors workshops and The Nonprofit Resource Center at the Woodland Park Public Library in collaboration with the Rampart Library District.
- ▶ Works to preserve the Midland Depot, part of the Colorado Midland system. It is only one of four surviving depots of the system and the only one that will be open to the public when completely refurbished.

Despite the progress, there is still much to do. Join us as we continue to preserve this—and other—priceless Teller County resources.

### Current and future projects

Contact any board member for more information about THE Coalition and its mission and current projects, such as its Heritage Tourism plan.

#### ***Heritage Tourism continued from cover.***

Using internationally-recognized map symbols, the group has identified approximately 100 sites that have significant natural, cultural, and historic importance in Teller County. Future plans may include interpretive signage at these sites and smart phone apps to enliven tours for visitors to the area.

"There are some exciting prospects," said Marion Ritchey Vance, committee chair. "By identifying and interpreting significant resources, we can encourage tourists and passers-by to spend more time here and patronize local businesses, rather than simply passing through en route to other destinations.

The more we all know about the opportunities available in the county, the better we can refer visitors to sites and businesses that interest them."

**Member organizations  
associated with  
THE Coalition**

- Catamount Institute
- City of Cripple Creek
- Coalition of Pikes Peak Historic Museums
- Coalition for the Upper South Platte
- Cripple Creek and Victor Gold Mining Company
- Divide Chamber of Commerce
- Gold Belt Scenic Byway
- Gold Camp Victorian Society
- Gordon Jackson Foundation
- Palmer Land Trust
- Rampart Library District
- Rural Land Preservation Group
- Teller-Park Conservation District
- Trails & Open Space Coalition
- Two Mile High Club
- Ute Pass Historical Society
- Ute Pass Trails Committee
- Victor Heritage Society
- Victor Penguins Hockey Club
- Woodland Park Hockey Association

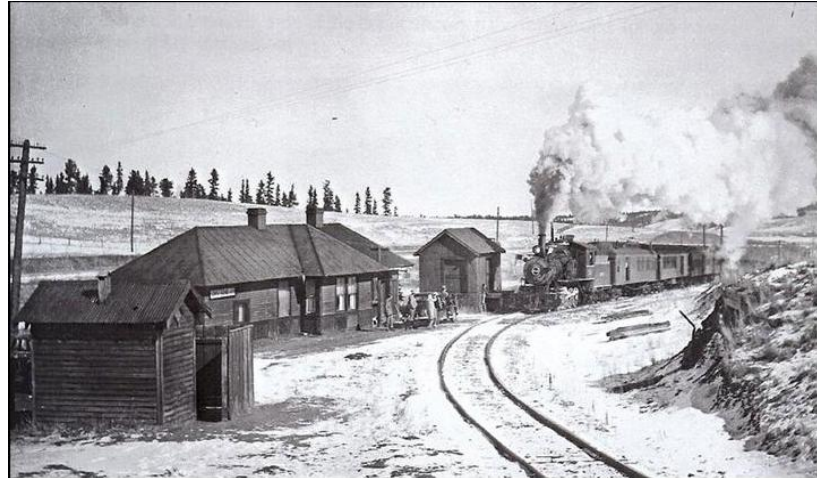
**Have an Event You'd  
Like Publicized?**

We publicize member organization events in this newsletter, which is posted online. We also post events on THE Coalition's Facebook page.

Contact managing editor Mary Menz at [mmenz@Q.com](mailto:mmenz@Q.com) for deadlines.

***Grant continued from cover***

Contracting should be completed by the end of 2011. THE Coalition looks forward to beginning work on the depot as soon as contracting is over and weather permits. The project will last two years and involve a number of elements to both stabilize the foundation and level the depot, and also preserve the exterior so that future preservation work can happen.



I give my personal thanks, and the thanks of THE Coalition Board of Directors, to Dick Unzelman and Marion Vance for their efforts to prepare the grant application. And, we are extremely grateful to all who wrote letters of support, including: Pete Kuyper, Teller County, the City of Woodland Park, the Divide Chamber of Commerce, the Ute Pass Historical Society, Mel McFarland and Laura Libby (SHF Heritage Tourism Specialist).

While THE Coalition has received several small grants from SHF in the past, this grant is the largest to date and the first to actually fund construction that is outlined in the master plan for preserving the depot. We have a lot of work ahead of us, but it will be a joy.

**Any Coalition members who would like to become involved in this project should contact Dave Martinek or Dick Unzelman. We appreciate skilled volunteers and can always use the help. Let the work begin!**

THE Coalition  
needs your  
financial support  
to continue to  
preserve the  
historic, cultural,  
natural,  
recreational, and  
scenic resources of  
Teller County.

## Annual Meeting

### When

Saturday, November 19

### Where

Cripple Creek Heritage Center  
9283 S Highway 67  
Cripple Creek

(719) 689-3315

### Time

2-4 PM

## Membership Keeps THE Coalition at Work!

Membership in THE Coalition is open to organizations and individuals that further our mission by supporting preservation of the historic, cultural, natural, recreational and scenic resources in and around Teller County.

We invite members to take advantage of the following services co-sponsored or provided by THE Coalition:

- The Nonprofit Resource Center at the Woodland Park Public Library; as well as consultation on grant seeking
- Nonprofit workshops and hands-on training sessions at the Woodland Park Public Library
- Letters of support for grant applications
- Newsletter featuring member profiles, calendar of events, and updates on area projects and events
- When appropriate, use of 501(c)3 nonprofit status
- Listing on THE Coalition website at [www.TheCoalitionCO.org](http://www.TheCoalitionCO.org)
- Invitation to Annual Meeting

### Yes! I want to become a member!

- Nonprofit Organization \$25                       Government Agency \$50  
 Business \$50     Friend \$20

To support THE Coalition's important work in Teller County, an additional tax-deductible donation is enclosed.

- \$25                       \$50                       \$100                       \$250                       Other \$ \_\_\_\_

Total amount enclosed \$ \_\_\_\_\_

Name(s) \_\_\_\_\_

Organization \_\_\_\_\_

Website \_\_\_\_\_

Street address \_\_\_\_\_

City, State ZIP \_\_\_\_\_

Phone \_\_\_\_\_

Email \_\_\_\_\_

Today's date \_\_\_\_\_

Yes, please list this information in THE Coalition directory on the website.

Yes, I want to volunteer! Please call me about volunteer opportunities.

Become a member today! Complete this form and mail to THE Coalition at:

THE Coalition  
P.O. Box 368  
Woodland Park, Colorado 80866

**Looking for a special gift for that friend or family member who has everything?**

Consider this gift the answer to your challenge. Not only is the book a beauty to look at, but the accompanying Road Atlas & Travel Guide provides directions, maps, and tips for traveling to off-the-path daytrips and side trips in each of the five geographic areas of Colorado:

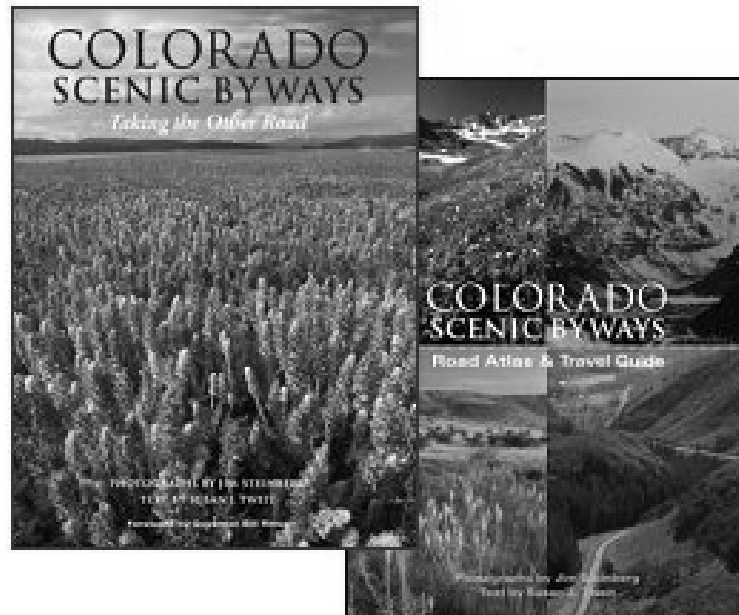
- Plains
- Foothills
- High Peaks
- Mountain Parks
- Plateau Country

**I continue to travel this great state of ours, and every outing brings a new discovery. Reading *Colorado Scenic Byways* will inspire all of us to take to the road to enjoy these special places that truly set Colorado apart.**

*Bill Ritter, Jr.  
Governor of Colorado*

## **Colorado Scenic Byways Book Available for a Limited Time**

Purchase a signed copy of *Colorado Scenic Byways: Taking the Other Road* and support THE Coalition. This award-winning two volume set is specially offered by THE Coalition at the discounted price of \$65, plus \$11.95 shipping. Or save on shipping costs and pick it up at the next meeting!



This book is shown in gray scales here to accommodate the black and white printing of this issue of *Heritage Notes*, but it is truly a gorgeous full-color coffee table book. Check out the spectacular full-color cover on THE Coalition’s website and order it online at [www.THEcoalitionCO.org](http://www.THEcoalitionCO.org).

### **A look inside...**

This two-volume edition features a hardcover book with 248 pages of stunning photography by renowned author and photographer Jim Steinberg and text by plant ecologist-turned-writer Susan J. Tweit. Accompanying the book is a soft cover Road Atlas & Travel Guide with additional photographs and text.

The Road Atlas & Travel Guide is all about getting people to the scenic places documented in the book. Information includes maps and directions, but also includes information like—

- Length of trip and highlights
- Driving time
- Road type
- Season closures, if any
- Fees
- Location information and websites to visit
- “Don’t miss” info and tips from the authors!

Colorado Scenic Byways is a Colorado Book Award Winner and was recognized as Book of the Year by *ForeWord Magazine*.



## 20<sup>th</sup> Annual “Christmas in Divide”

The Divide Chamber of Commerce will host its 20<sup>th</sup> annual Christmas in Divide Craft Fair at the Summit Elementary School on Saturday, November 12, from 9 AM to 3 PM.

Since 1991, the Divide Chamber has hosted this craft fair. This event kicks off the holiday season and provides opportunities to get some early holiday shopping completed. Shoppers can also

- Have pictures taken with Santa
- Purchase baked goods
- Watch children perform on stage
- Sing-along with other entertainers

### Interested in renting a booth for this event?

Vendors who wish to participate in the fair still have time to rent a space. Contact Joe Kain at Ancestral Arts (719) 687-2278 for a registration packet.

## Victor Lowell Thomas Museum Announces Spring Tours

Another year of successful gold mine tours has ended at the Victor Lowell Thomas Museum. While the fall season is winding down for the museum, plans for the 2012 tours are already under way.

The Cripple Creek & Victor Gold Mining Company (CC&V) operates the current-day Cresson operations—the largest gold mine in Colorado—just outside of Victor. Guided tours of this mine are offered during the summer months, starting at the Victor Lowell Thomas Museum.

**These tours book quickly so reservations are highly suggested.** Tours start May 26, 2012, at 10 AM and are at 10 AM & 1 PM daily through Labor Day, except there are no tours on Thursdays. The cost is \$7.50 per person, all ages. Tours last about two hours and begin at the Victor Lowell Thomas Museum at 3rd & Victor Avenue in Victor.

Gold mine tours are offered through a generous arrangement with the CC&V Gold Mining Company who supplies the vans and drivers and donates all proceeds to the museum.

The museum is planning a few days of special hours for the holidays for those who want to do some Christmas shopping. For more information on the museum or to make a mine tour reservation, visit [www.VictorColorado.com](http://www.VictorColorado.com).

## Special Holiday Shopping Hours and Free Admission at the Victor Lowell Thomas Museum

The Victor Lowell Thomas Museum will be open for special Christmas hours Saturday and Sunday December 3- 4 and December 10-11 from 11 AM to 4 PM, weather allowing. Admission to the museum will be free and the gift shop will offer the chance to purchase unique gifts for the holidays. The museum is normally closed during the winter months due to a lack of heat in the building. To support Victor’s efforts at having shops open for holiday shopping, and to offer the community a gift of free admission, the museum will open for those weekends. Put on an extra sweater and visit the museum while shopping.

If weather is snowy and icy, please call (719)689-5509 to be sure they are open for the day.

The Elf Emporium holiday gift bazaar is being planned for December 10 and 11 at the Victor Community Center at Portland Avenue and Second Street. In the event of drastically cold weather that weekend, the museum also will set up a table at the emporium with items from the gift shop.

## **Rail Tracks—a Special Gift to THE Coalition’s Midland Depot Project**

Paul Bowman, featured in the article “Taking up the Tracks” at right, recently gave to the Midland Depot restoration project nine feet of authentic Midland Terminal rail road track.

Eventually, this gift will be on display in the Midland Terminal!

### **Charitable Gifts benefit THE Coalition**

Gifts of cash or in-kind gifts of property or services to THE Coalition may be tax-deductible.

Gifts of cash or property must meet certain criteria in order to be tax-deductible. Contact your tax professional for specific information.

## **Taking up the Tracks**

**By David Martinek**

“When we got to Divide, it was -34 degrees in the morning. Neither one of the diesels would start.”

Eighty-year-old Paul Bowman reflected back on his teenage adventure working for the Texas contracting company hired to tear up the Midland Terminal Railroad tracks in 1949 and remembered the frigid morning in Divide.

“I was hired near Mueller that winter. The first job I had was on the ground pulling out rail spikes,” said Paul. “I didn’t like that job. Later, by the time we got to Divide I was moved to the flat car and helped hoist the rails up and store them on the ore cars behind us.”

By early 1949, the opening and operation of the Carlton Mill in the Cripple Creek and Victor Gold Mining District made transportation of ore down to Colorado City unnecessary. After more than 56 years of operation, the Midland Terminal was finally shutting down. Years of long nightly trains laden with gold ore moving slowly across the foothills of Pikes Peak to Divide, and then down Ute Pass to the Golden Cycle mill for smelting, had come to an end. The water tank in Midland, where the trains stopped to refill their boilers and divide the ore cars among the helper engines for the push up the hill to Murphy stood silent after January 1949. There would be no more tricky passage through Cantiberry crossing.

A salvage company from Texas was hired to remove the 90-pound rails all the way from Cripple Creek down to Colorado City. At the young age of 18, Paul Bowman was hired on as a laborer. Originally from Boston, Paul and his brothers came to Cripple Creek with their father, George Bowman. They lived within sight of all the railroads serving the gold district, principally the Midland Terminal and the “Short Line.” Paul was fortunate to land a summer job.

For nearly three quarters of a century steam locomotive technology powered railroads across the length and breadth of America, but by 1949 diesel locomotives were beginning to appear. The one and only diesel locomotive ever to run on the Midland Terminal tracks was the engine that served the crew taking up the rails. Pushing three ore cars and a flat car in front of it, the engine would roll up to the end of the track bed and then back away as the rails were removed.

Each iron rail weighed from 900 to 1000 pounds. Another small diesel engine on the back of the flatcar powered a winch; which, in combination with a mast frame on the very back of the car, hoisted each rail off the road bed. Once the spikes were removed, the rail was lifted into the arms of the men who manhandled the rail back into one of the three ore cars provided for storage.

*See Tracks continued on back cover.*



**THE Coalition office**  
P.O. Box 368  
Woodland Park, Colorado 80866

Check out upcoming events  
and past newsletters on our website!

[www.TheCoalitionCO.org](http://www.TheCoalitionCO.org)

## **Annual Meeting Notice and Membership Renewal Enclosed**

### ***Tracks continued from page 7.***

The crew worked from January to June that year, removing all the rails down Ute Pass, through all eight tunnels, and into the rail yards around the round house.

“It was hard work,” remembered Bowman. “But now, sixty-two years later, I’m pretty proud to have been a part of it.”

*Reprinted with permission from The Ute Country News (October-December 2011).*

## **You’re Invited to Attend THE Coalition’s Annual Meeting!**

The Teller Historic and Environmental (THE) Coalition  
invites members and friends  
to join in the Annual Meeting

Saturday, November 19

2-4 PM

Cripple Creek Heritage Center  
9283 S Highway 67  
Cripple Creek

Refreshments served

Hear the latest about THE Coalition's Heritage Tourism Project  
and restoration of the Midland Depot in Divide.

Share with us your ideas and suggestions for the upcoming year!